




YOU ARE WELCOME AT MTSU



**MIDDLE
TENNESSEE**
STATE UNIVERSITY.

Meet MTSU	p.05
Check out our majors	p.09
See our community	p.17
Explore our campus	p.19
Find support	p.25
Prepare for work	p.29
Choose value	p.31
Meet Winton Cooper	p.32

 @mtsuintered  @mtsuintered  @mtsuinternational

WELCOME TO MIDDLE TENNESSEE STATE UNIVERSITY

I AM *true*
BLUE



WELCOME TO CHOICE

Find what you want to study on our 515-acre campus in Murfreesboro—a friendly, fast-growing college town just 30 miles from Nashville. Our faculty, students, and programs are among the best in the nation, from Recording Industry to Aerospace, Concrete Industry to Entrepreneurship, Music to Public History, Forensic Science to Social Work.

Get real-world experience that other colleges often offer only to graduate students. Your classroom may be behind a camera at a popular music festival, combing an archaeological dig, performing on an international stage, helping patients on an underwater treadmill, or programming a robot at the Nissan auto facility.

BECOME TRUE BLUE

180+ undergraduate degree programs

400K square feet of science innovation

200+ student organizations



"I remember the day that I landed in Nashville, and I had a volunteer pick me up from the airport. It was such a heartwarming feeling. This kind of welcoming had continued throughout my four years of college at MTSU."

Nakanya Rodruepid
Aerospace graduate from Thailand



WELCOME TO EXCELLENCE

MTSU has been named among the **"Best Universities in the Nation"** to earn an undergraduate degree by The Princeton Review, which called it "a go-to choice for those wishing to receive a quality and affordable education."

 State-of-the-art equipment and facilities

 17:1 student to faculty ratio

 Research opportunities and hands-on learning

 200+ courses with free tutoring

WELCOME TO ACADEMIA

Choose from plenty of high-quality majors at MTSU—many nationally ranked. You'll be assigned an academic advisor in your first year to help you reach your goals. mtsu.edu/programs

BASIC AND APPLIED SCIENCES

Actuarial Science
Aerospace
Agribusiness
Animal Science
Biochemistry
Biology
Chemistry
Computer Science
Concrete Industry Management
Construction Management
Data Science
Engineering Technology
Environmental Science
Fermentation Science
Forensic Science
Geosciences
Horse Science
Mathematics
Mechatronics Engineering
Physics
Plant and Soil Science
Science

BEHAVIORAL AND HEALTH SCIENCES

Athletic Training
Community and Public Health
Criminal Justice Administration
Exercise Science
Family and Consumer Studies
Industrial/Organizational Psychology
Interior Design
Leisure and Sport Management
Nursing
Nutrition and Food Science
Physical Education
Psychology
Pre-Graduate School
Social Work
Speech-Language Pathology and Audiology
Textiles, Merchandising, and Design
Tourism and Hospitality Management

EDUCATION

Early Childhood Education
Elementary Education
Middle Level Education
Special Education

BUSINESS

Accounting
Business Administration
Business Innovation and Entrepreneurship
Commerce
Economics
Finance
Information Systems
Management
Marketing
Risk Management and Insurance
Supply Chain Management

LIBERAL ARTS

Africana Studies
Anthropology
Art
Art Education
Art Therapy
Communication
Dance
English
Foreign Languages
Global Studies and Human Geography
History
International Relations
Music
Philosophy
Political Science
Religious Studies
Sociology
Theatre

MEDIA AND ENTERTAINMENT

Animation
Audio Production
Interactive Media
Journalism
Media and Entertainment
Media Management
Photography
Recording Industry
Video and Film Production

OTHER

Integrated Studies



WELCOME TO TOP RANKING

With highly trained and dedicated faculty, our academic programs are among the best of the best.

1.5% top business schools
in the world

No.1 audio engineering
school in U.S.

Top 30 nursing schools
in U.S.

15% best music
programs in U.S.

22,000+ students and nearly 1,000 full-time faculty

Degrees offered at bachelor's, master's, doctoral levels

200+ EXL courses with real-world, experiential learning





WELCOME TO HANDS-ON EXPERIENCE

Aerospace **Popular Major**

Study at one of the largest collegiate aviation programs in the United States. MTSU's Aerospace faculty members are widely recognized and respected within the industry for their knowledge and experience. Get hands-on experience with the newest DA40s, which have automated flight control and synthetic vision technology.

Aerospace students have several choices of concentration:

- Aerospace Technology
- Aviation Management
- Flight Dispatch
- Maintenance Management
- Professional Pilot
- Unmanned Aircraft Systems Operations



"Being an international student is difficult at first because you will be in a different country all by yourself not knowing anyone, but with the help and support of the international office, friends, and professors, you will get through it."

Nawaf Alogaily
Aerospace graduate from Saudi Arabia



WELCOME TO PROBLEM- SOLVING

Actuarial Science **Popular Major**

Get interdisciplinary training to apply mathematical skills, statistical methods, data science, and computing techniques to manage risk and solve problems in insurance, finance, and pension programs.

MTSU's advanced curriculum gives students a head start on actuarial professional exams.

2020 Casualty Actuarial Society University Award recipient

Business Administration **Popular Major**

Expand your career options with this broad business degree. You'll learn to manage resources and people through courses in management, marketing, economics, finance, and business law.

Accelerated option lets you earn graduate-level credits



"Besides classes, the instructors also email us about job opportunities and academic seminars. They really care about our success and generously offer their help to all the students."

Yuhang Mou
Actuarial Science graduate from China

One of the 20 Best Places to Live in America

—Time magazine

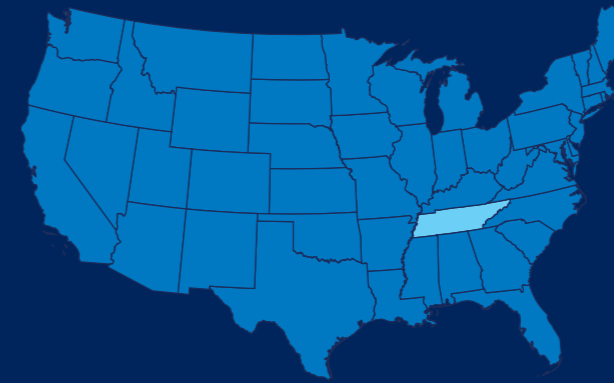
“Brims with small-town charm”

—Southern Living magazine

“A surprisingly hip town”

—Rolling Stone magazine

WELCOME TO HOME



Just outside of Nashville and part of one of the nation’s hottest economies, Murfreesboro is home to more than 147,000 people. The city has lots of local entertainment and shopping, plenty of access to athletic events, and a beautiful physical environment.



Murfreesboro, the “Most Livable Town in Tennessee,” is one of the 10 fastest-growing midsize cities in the nation, but, like MTSU, it maintains the feel of a tight-knit community.



“The first time I saw people skateboarding on campus, I thought, ‘Wow, it looks so cool! Should I try to learn it?’ (Believe me, Vietnamese are good at riding bikes, but not skateboarding.) So far, I haven’t learned it yet, but I think I will do it one day.”

Ly Bui

Engineering Technology major from Vietnam

Murfreesboro is located just 30 miles south of Nashville and is considered to be within the Nashville metro area.





WELCOME TO ATMOSPHERE

We know MTSU is far from home, but we do our very best to make sure our international students feel at home. Our staffers in International Affairs are ready to assist you in any way we can, whether that is signing your I-20, guiding you through the processes of attending MTSU, or providing information about resources once you're here.

MTSU has 200+ student groups on campus, many with an international focus, including:

- Bahamian Students Organization
- Caribbean Student Association
- Saudi Student Union
- Asian Student Association
- Student Society for International Education
- MTSU Japan Club
- African Student Organization



What's it like
at MTSU?
Take a look.

Your classmates

MTSU has students from more than 60 countries. Here's a look at recent enrollments from our top countries of origin:

Saudi Arabia 188	Vietnam 11
China 138	Germany 10
Bahamas 52	Taiwan 10
India 48	Nepal 9
Nigeria 26	Oman 8
Kenya 19	Bangladesh 7
Ghana 18	Brazil 7
Japan 18	Canada 5
South Korea 11	



WELCOME TO LIVING

On-campus housing puts you in the **center of the MTSU community** and all the academic and extracurricular activities. Living on campus is one of the strongest influences on successfully completing a degree. And you will make **friendships that last a lifetime!**

Living Learning Communities

You can choose to live with students who share your interests. We have 16 Living Learning Communities on campus, including:

- Aerospace
- Chemistry and Biology
- Diverse World, Diverse Arts
- First-Year Experience
- Food, Agricultural, and Environmental Science
- Global Learning
- Music at Middle
- Women in Science and Engineering

Housing Types



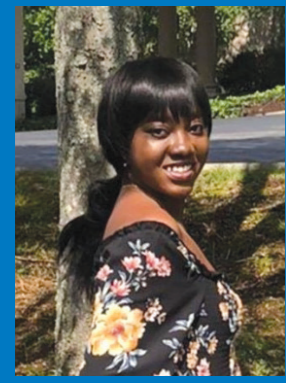
Traditional
Interior entryways



Quad suites
Exterior entrances



Apartments
Includes kitchen/living area



"Leaving home is never an easy decision, but MTSU is a place you want to be, a place where you are welcome, a place that gives room for all-round development. I am glad I made the choice to study at MTSU!"

Temitope Obisesan
Health Care Informatics graduate student from Nigeria



WELCOME TO SAFETY

Feel safe at MTSU with a Police Department that is open 24 hours a day, 7 days a week, 365 days a year. Our MTSU Police Department strives to preserve a safe and secure campus environment for all students, faculty, and staff.

Emergency Call Boxes

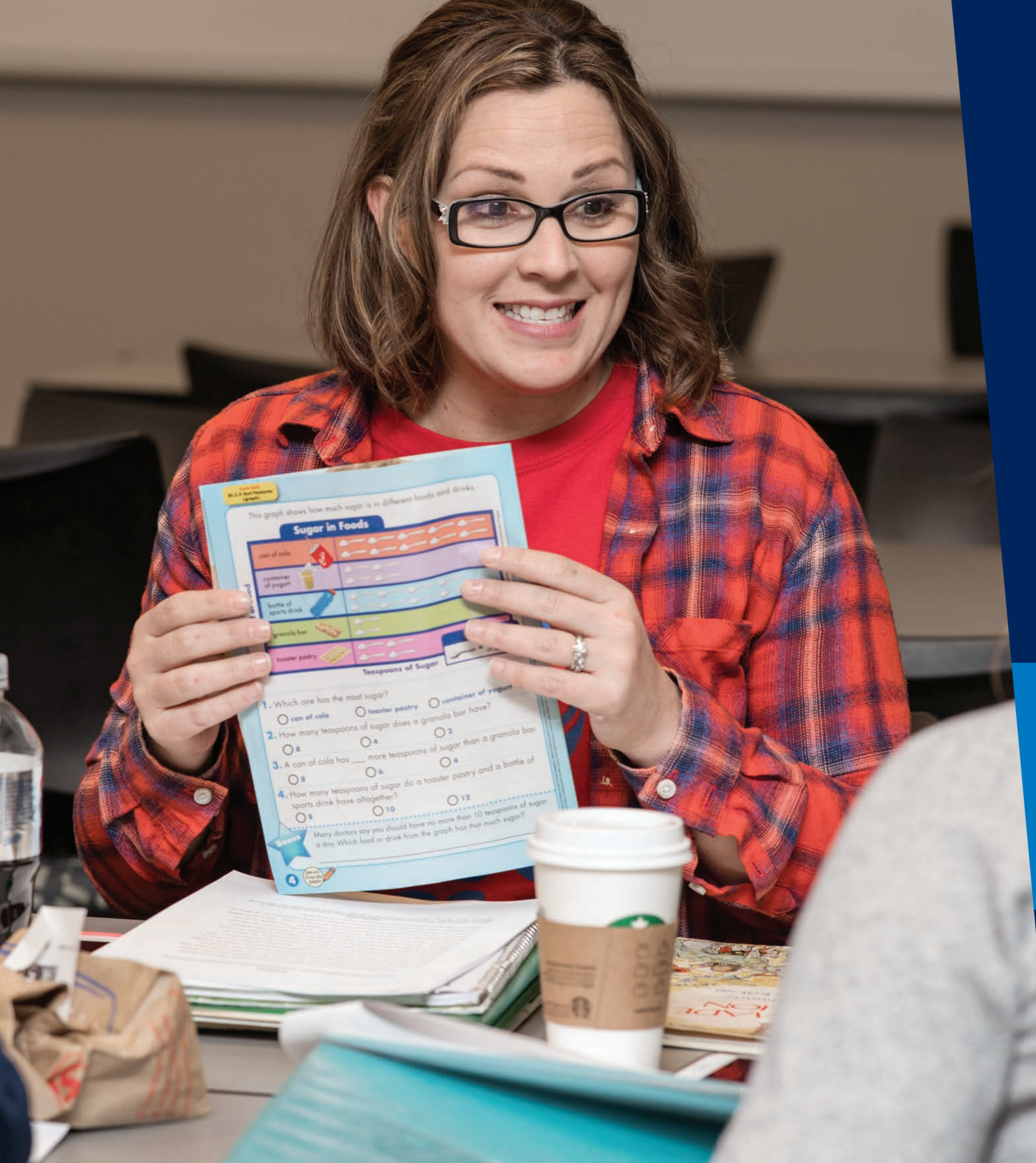
Emergency Call Boxes are installed across campus in case of an emergency. Push a button to immediately contact the University Police and promote the safety of those on campus.

Raider Patrol

Part-time student employees assist the MTSU Police Department by providing safety escorts for our campus community upon request. Raider Patrol personnel also check and secure doors and windows of University buildings.

Alert4U

Sign up to receive a text or email alert in case of an emergency that could affect campus (severe weather, crime, and other hazards).



WELCOME TO MENTORSHIP

New international students at MTSU have an important new resource: International Student Ambassadors. Launched in fall 2020, the program enlists exceptional international students at MTSU to serve as guides for newcomers.

Ambassadors draw on their own experiences with the campus lifestyle and American society to help new students adapt to MTSU. They're the perfect guides to campus resources and ways to get involved at MTSU.

Meet some of our International Student Ambassadors at mtsu.edu/intered/blog/.



"With support from my parents and the help of all the beautiful people that I have met at MTSU, I have been able to create a life here and call Tennessee my second home."

Shivani Purohit
Management graduate from India



WELCOME TO SUPPORT

We want international students to be successful and have unforgettable experiences at MTSU. You will find the support you need on campus, and the Office of International Affairs is always ready to help.

Library

Specialty librarians, research assistance, books, journals, databases, study spaces, computers

International Affairs

Assistance with travel signatures, OPT/CPT applications, on-campus employment, advice on maintaining visa status

Tutoring

Free tutoring for more than 200 courses in subjects from biology to recording industry

Counseling Services

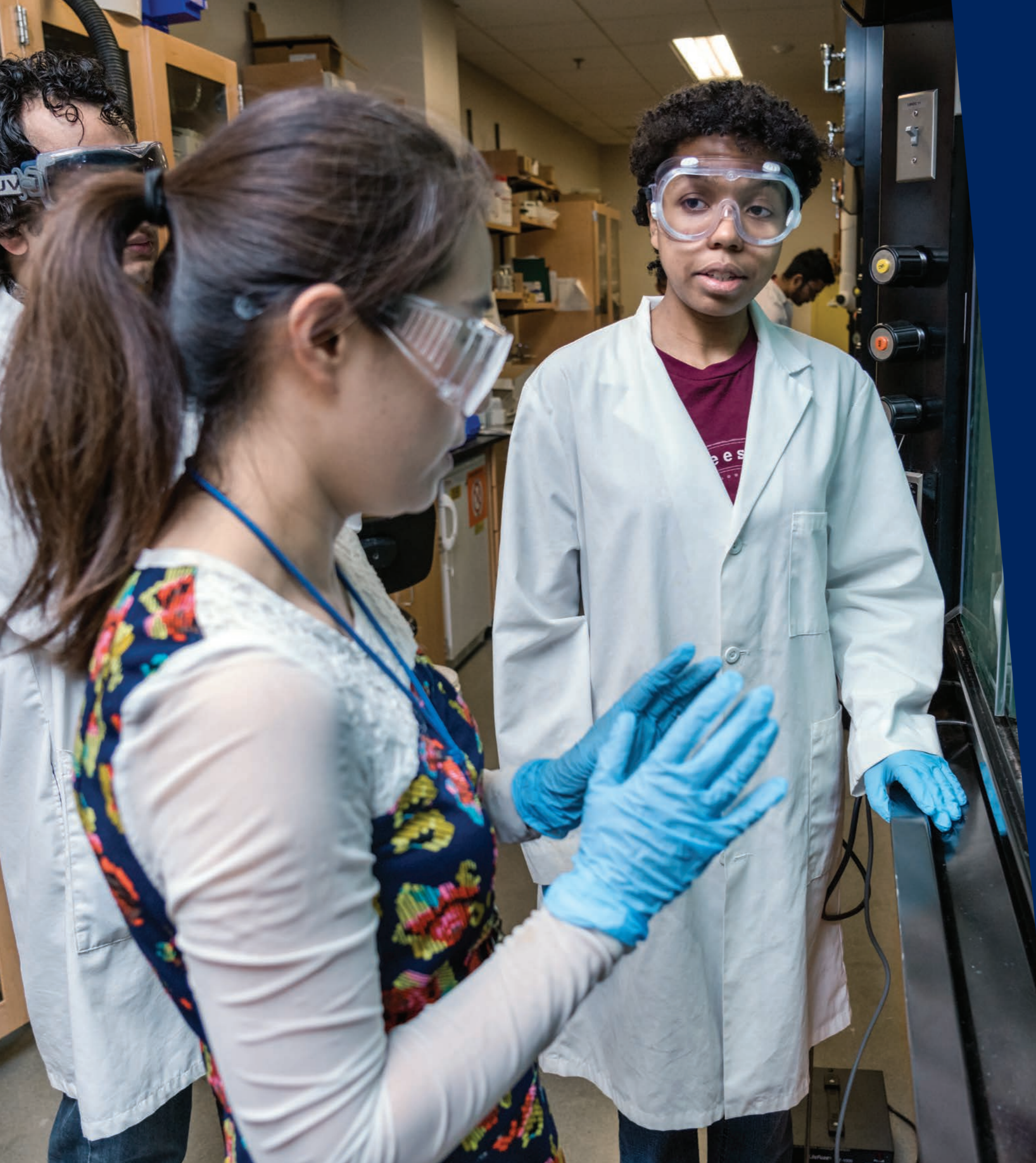
Support for students with stress, anxiety, depression, and other emotional needs

Writing Center

One-on-one assistance with any writing project, for class or personal use

Rec Center

Aerobics, swimming, rock climbing, and more to bolster physical health



WELCOME TO EMPLOYMENT

Career Services

Looking for a university that helps its students with career advice and assistance with finding employment after graduation? MTSU's Career Services assists students and alumni as they prepare for the next steps after graduation.

Career Advisors

One-on-one guidance for students who need help choosing majors and career paths

Job and Internship Search Resources

Access to platforms such as Handshake and Careershift as students prepare for job searches

Professional Document Resources

Professional assistance with résumés and cover letters as students prepare to apply for jobs after graduation

Other Resources

Career Closet and Career Events to prepare students for interviews and help them discover career options

WELCOME TO VALUE

Undergraduate 2021–22

Credit Hours	Out-of-State	Program Service Fee	Out-of-State Total*
12	\$13,188	\$944	\$14,132
13	\$13,408	\$944	\$14,352
14	\$13,628	\$944	\$14,572
15	\$13,848	\$944	\$14,792
16	\$14,068	\$944	\$15,012
17	\$14,288	\$944	\$15,232
18	\$14,508	\$944	\$15,452

Graduate 2021–22

Credit Hours	Out-of-State	Program Service Fee	Out-of-State Total*
9	\$13,005	\$711	\$13,716
10	\$14,450	\$790	\$15,240
11	\$14,738	\$869	\$15,607
12	\$15,026	\$944	\$15,970

International Merit Scholarship

MTSU offers an International Merit Scholarship to both undergraduate and graduate international students. This scholarship is per academic year and is merit based. Applicants are automatically considered for a scholarship once admitted to MTSU. The scholarships are renewable annually if the student maintains a 3.0 GPA and full-time enrollment. However, this scholarship is not available during summer semester.

GPA	Merit Award
3.75 – 4.00	\$16,000 USD
3.50 – 3.74	\$8,000 USD
3.25 – 3.49	\$4,000 USD

Apply today!

Applications for the fall semester are due by July 1.
Get started at mtsu.edu/intered/apply



Winton Cooper

WELCOME TO FRIENDS

Hello! I'm Winton Cooper. I'm from the Bahamas, and I'm the first international student to serve as president of the Student Government Association at MTSU.

When I was running for office, I promised to revolutionize the Student Government Association (SGA) to create a purpose-driven organization with a new mission and vision.

Under my leadership, SGA will seek to empower student organizations, become more accessible and accountable, bolster our advocacy, and celebrate the diverse community that makes us a premier institution. Students rely on us to advocate changes on their behalf, and it is our job to ensure we facilitate and expedite that process as much as possible.

We will actively publicize the numerous activities and events we put on, seek partnerships with community organizations, and revive our dormant social media platforms.

What does that mean for you? It is SGA's hope that we can work together to create a more immersive welcome experience for future international students on campus. We also look forward to celebrating the inaugural International Students' Day this November alongside many cultural partnerships over the course of the next year.

If you want to be a student leader and make the most of your academic experience as an international student, consider the Student Government Association. As we welcome students, faculty, and staff back to campus, allow me to be the first to say, **Welcome home!**

**MIDDLE
TENNESSEE**
STATE UNIVERSITY.

I AM *true*
BLUE

 @mtsuintered  @mtsuintered  @mtsuinternational

0621-9768 / Middle Tennessee State University does not discriminate on the basis of race, color, national origin, sex, disability, age, status as a protected veteran, or any other category protected by law. See our full policy at mtsu.edu/iec.